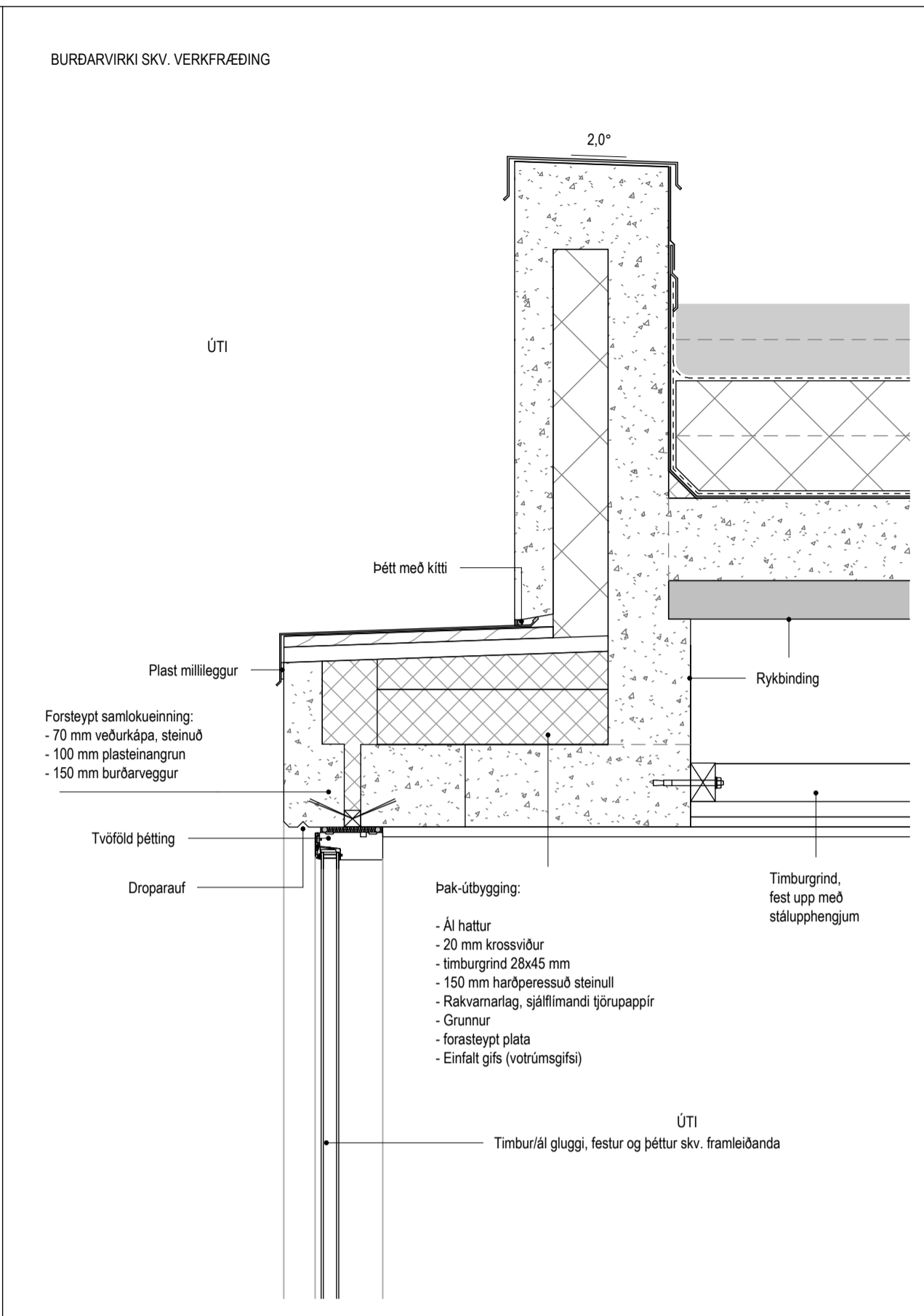
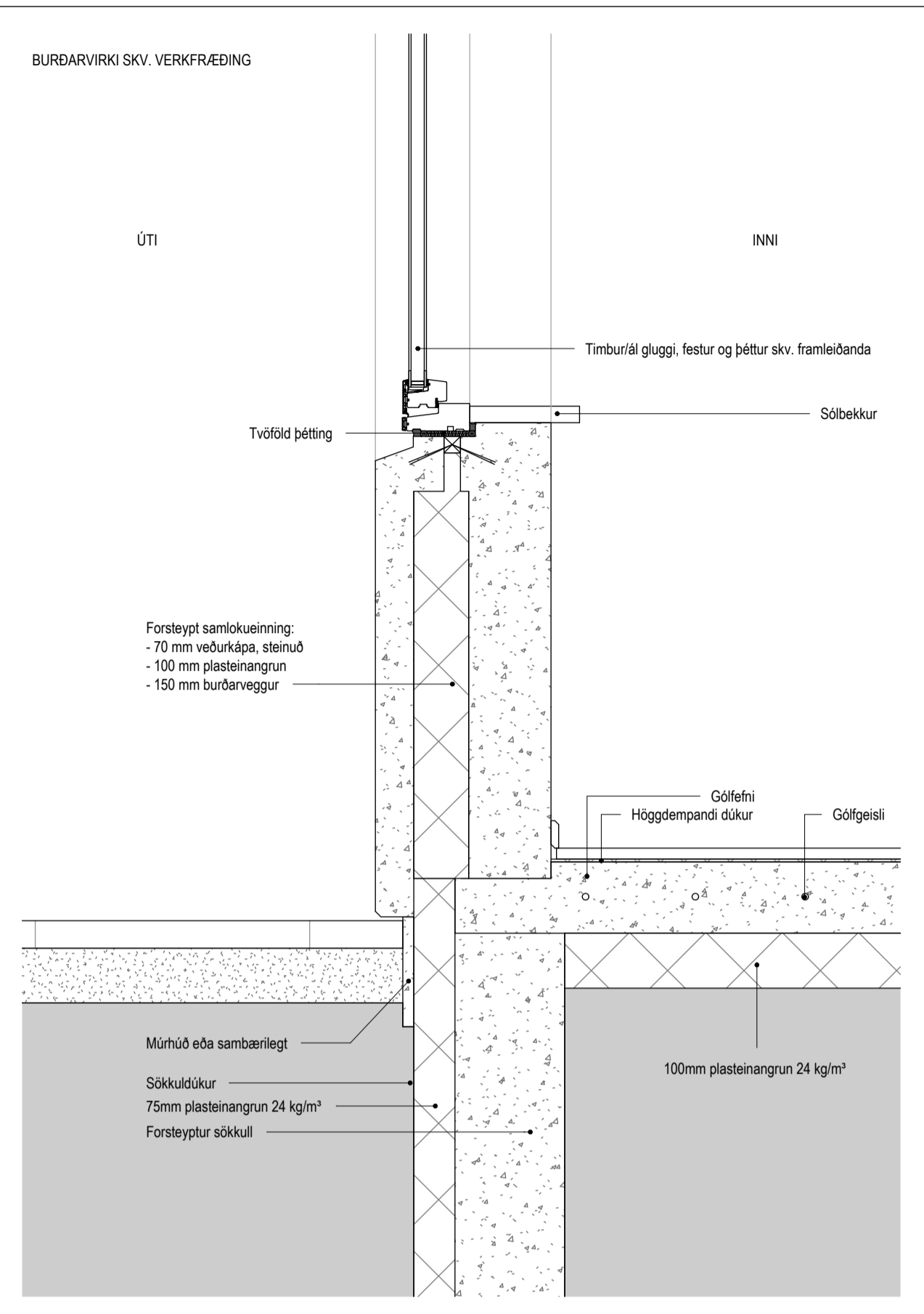


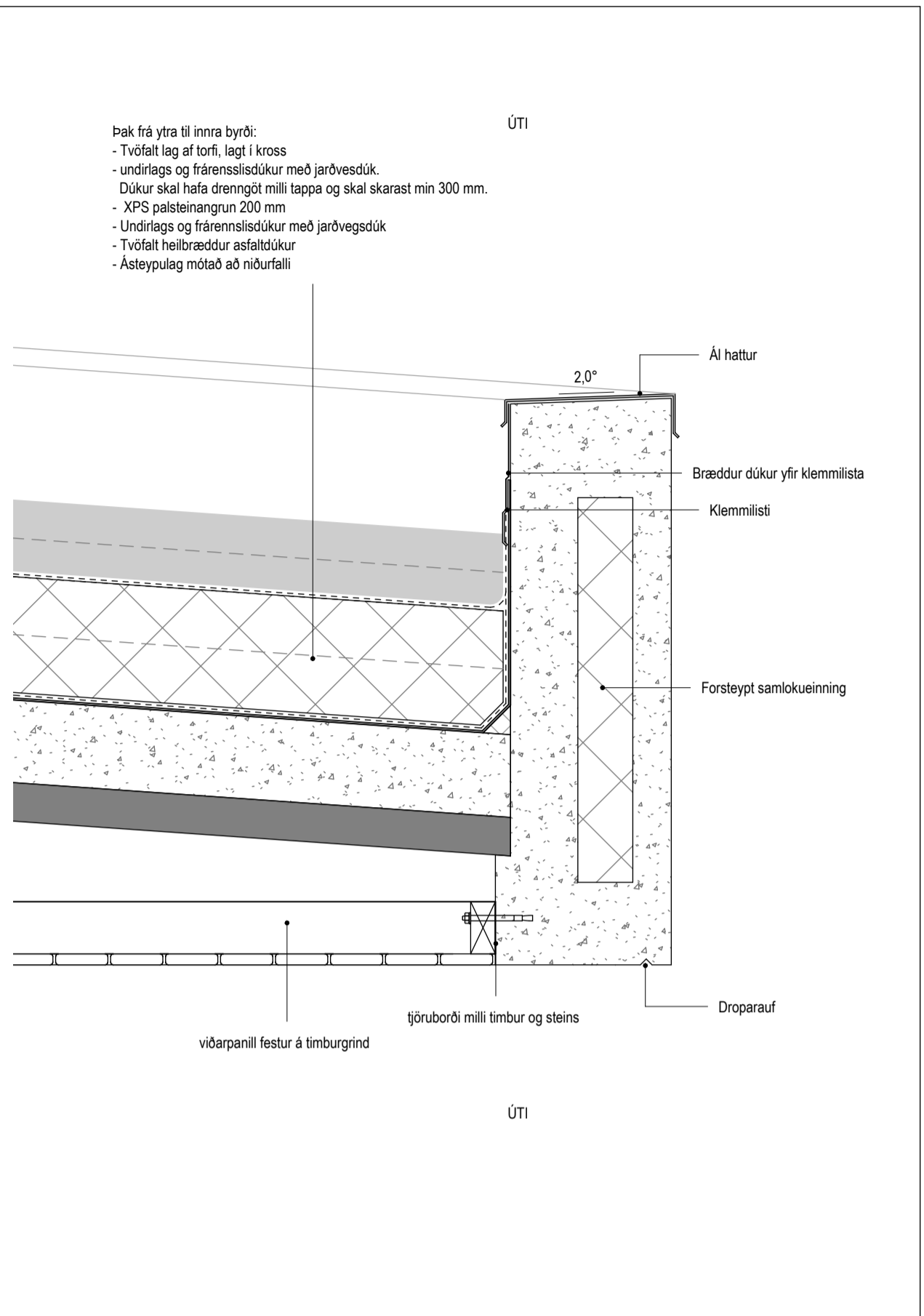
Deili 1 A404
1 : 10



Deili 2 A404
1 : 10



Deili 3 A404
1 : 10

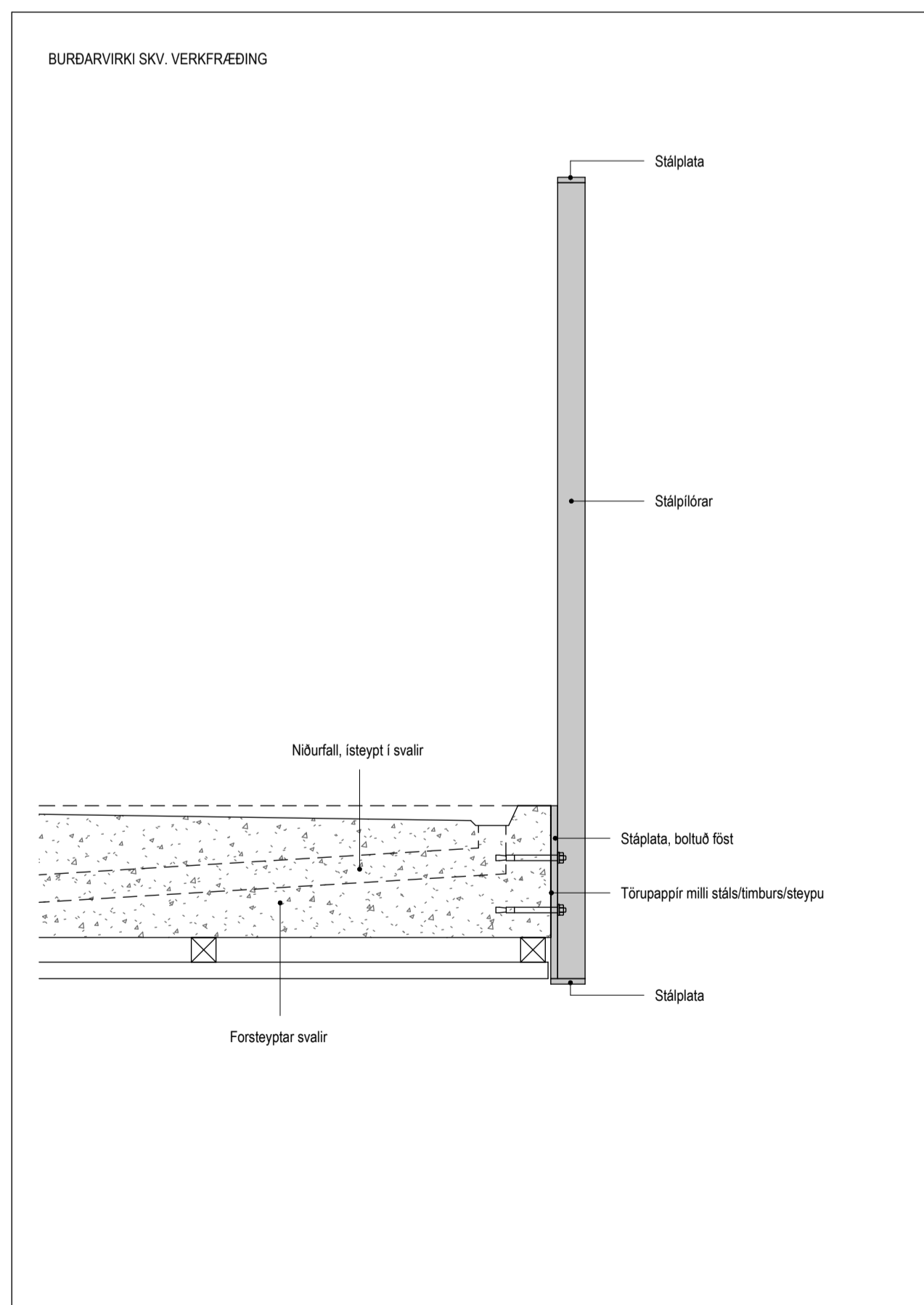


Deili 4 A404
1 : 10

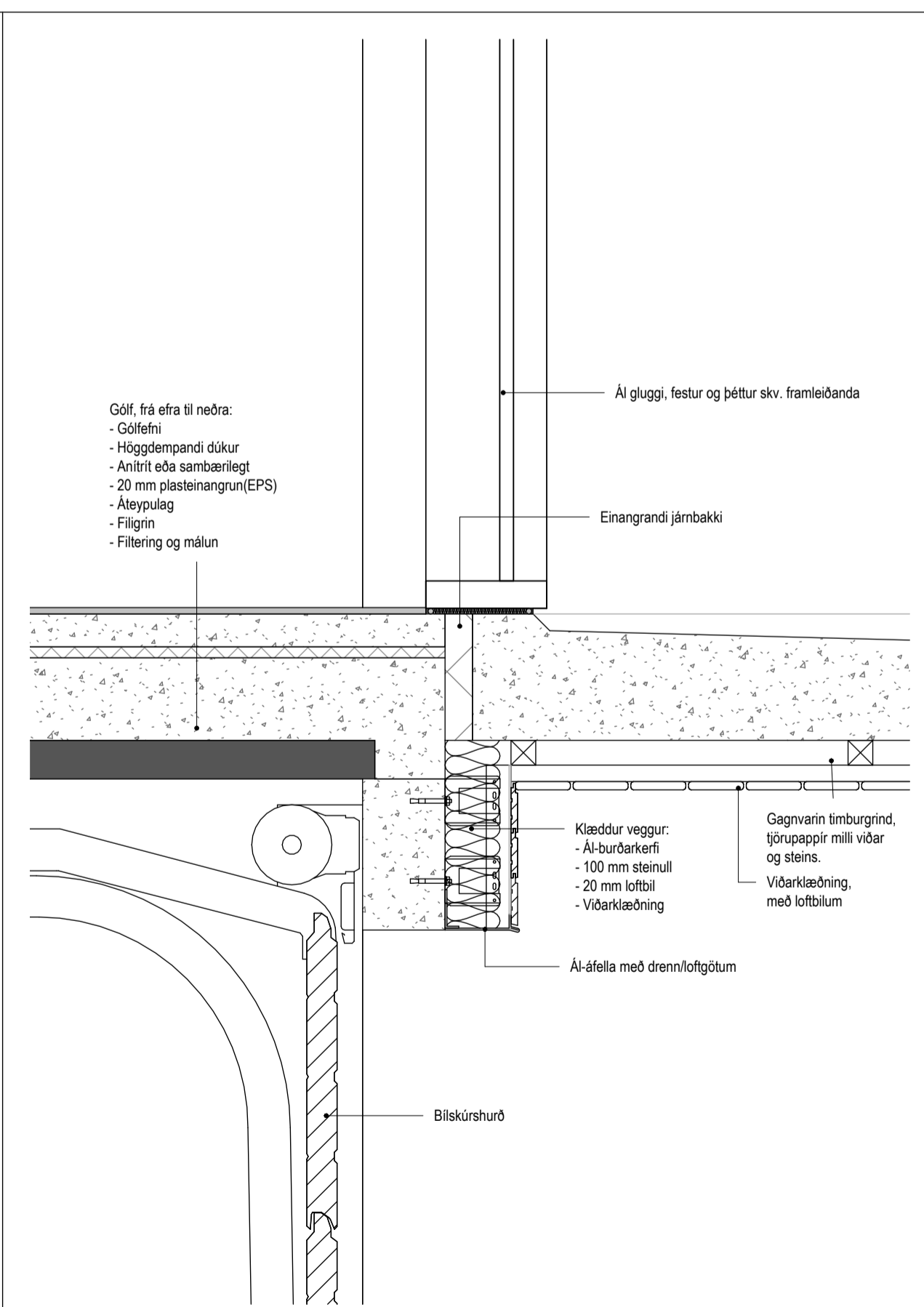


Tákn

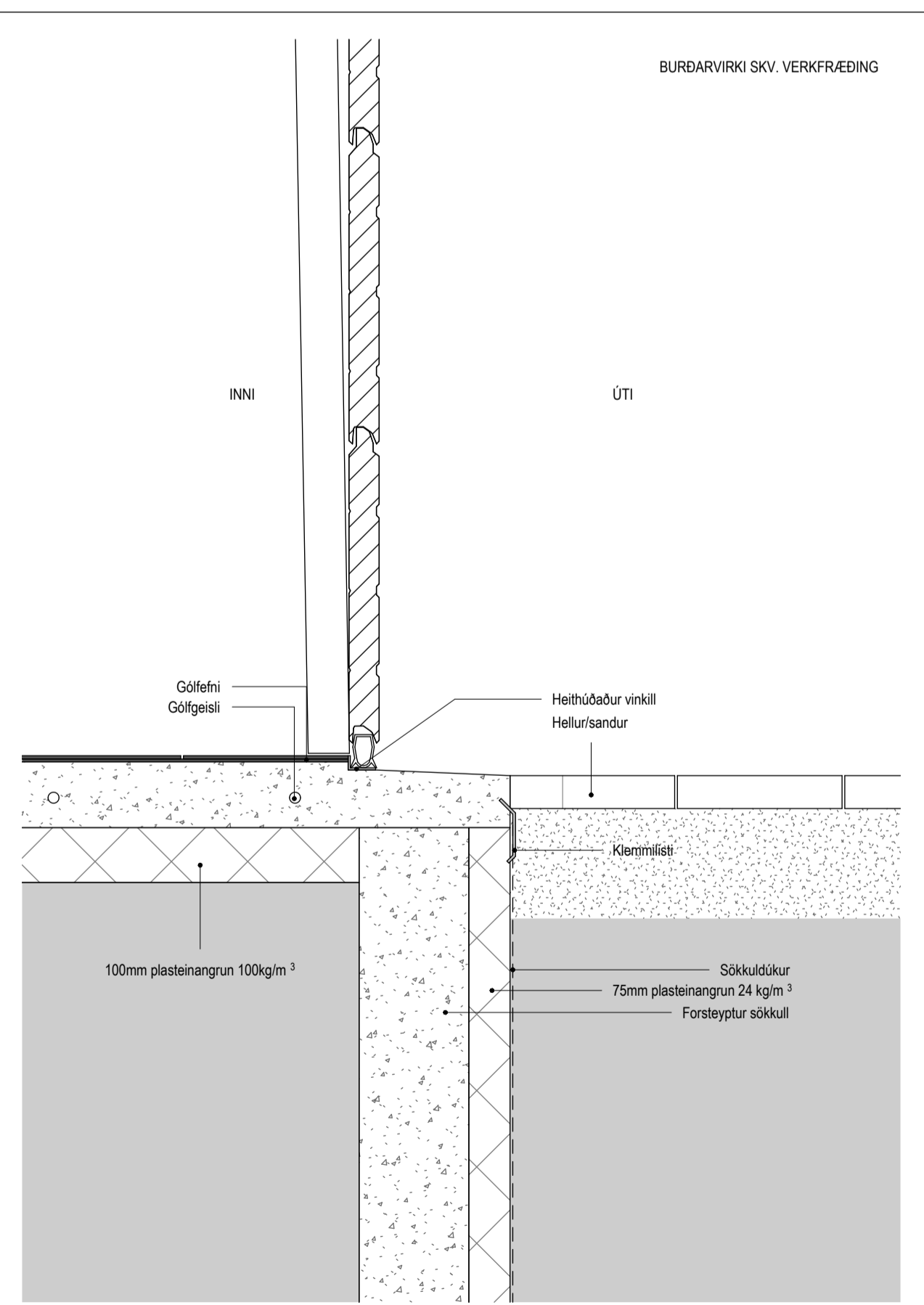
GN	= Gölfuburfall	Brunatákn
BN	= Þakuburfall	EI60
SN	= Svænanuburfall	Veggir og hæðaskil
LR	= Loftfæsting	EI90
VLR	= Vélvörn loftfæsting	A-EI60
PK	= Þakassar	A-EI120
NL	= Neyðarljós	REI60
BO	= Þjörgunarop	REI120
R	= Ráskynjari	A-REIM120
HSL	= Hæðslökktæki	
ÚT	= Merktur útgangur	
HV	= Hitaveita	Hurðir
VV	= Vátaveita	E30-CS
RR	= Rafmagnaveita	EI30-CS
ÚK	= Útkrani	EI60-CS
DS	= Dyrasími	
DS	= Dyrasími	Gluggar
RS	= Fellingisvið þjörgunarop	E30
BS	= Brunaslanga	
○	= Sligleðsla	
○	= Sligleðsla út	
□	= Sljómstöð brunavörnunarkerfis	
□	= Inntak	
□	= Bilastæði fyrir fatlaða	



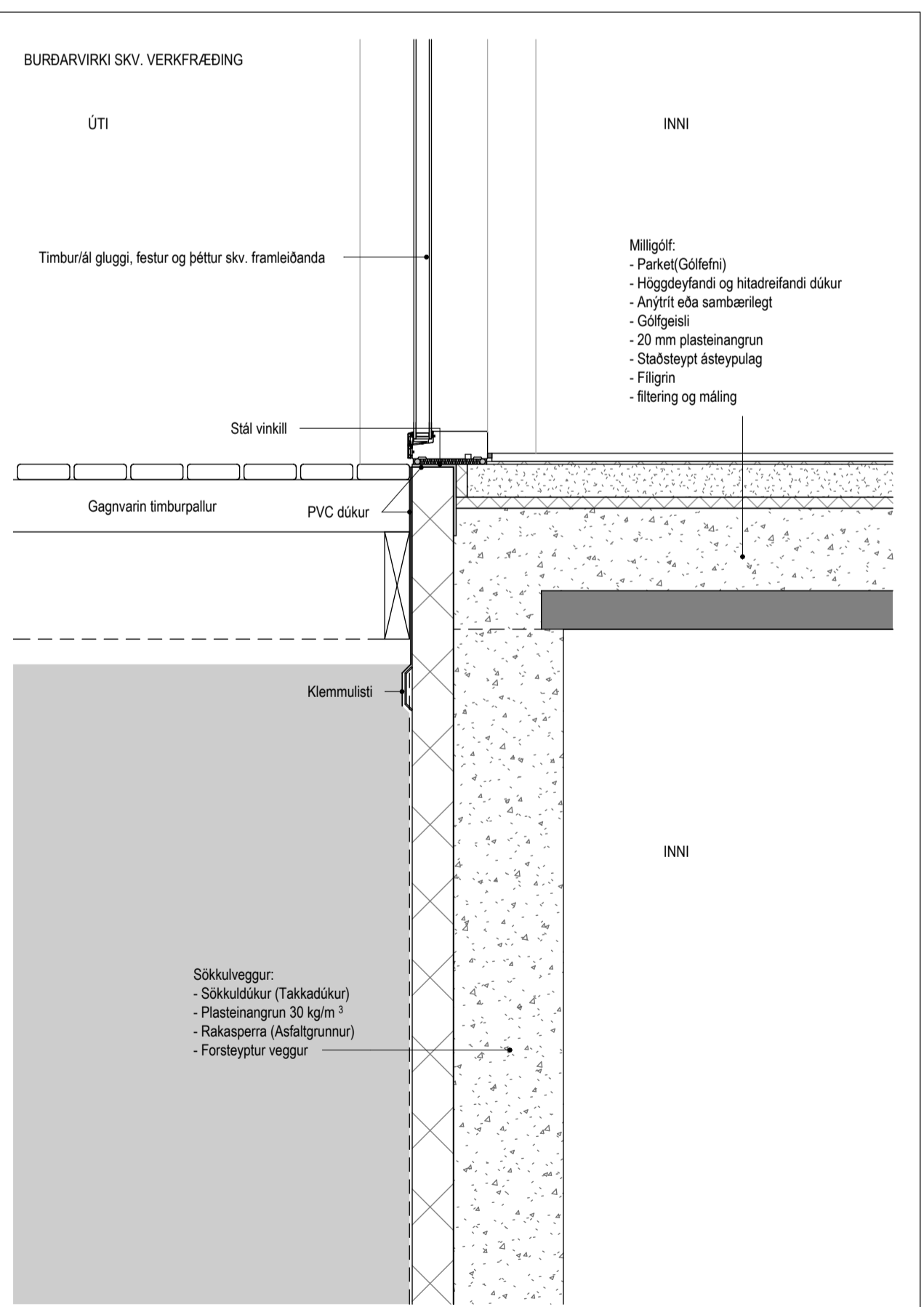
Deili 5 A405
1 : 10



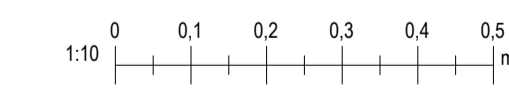
Deili 6 A405
1 : 10



Deili 7 A405
1 : 10



Deili 8 A405
1 : 10



Valhönnun
Laugavegur 178 - 105 RA - Netfang: valhonnun@valhonnun.is - Sími: 5426600/6214249

Axlará 23, Hafnarfjörður

Landnúmer: 234282 Einbýli

Deili 1-8
Sérupprættir

Hönnun:	Verknumér:	24017E
Valur Þór Sigurðsson, kt.060380-3179	Mælikvæði:	1 : 10
Samþykkt:	Dagsetning:	20.06.2024
	Bláð:	Útgáfa:

A501